



DUCTILE IRON VALVE CHAMBER

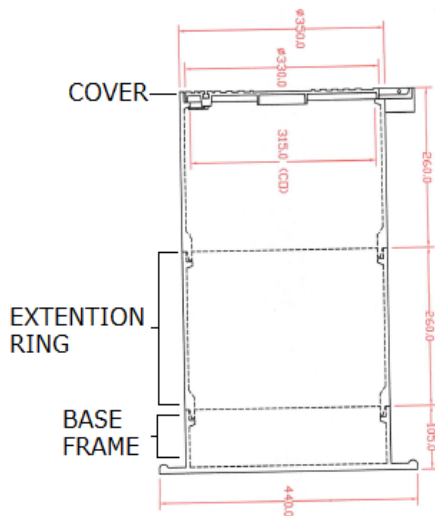
COMPLY TO : BS EN 124 : 1994 (AMD & 587/1995)

BRAND : TEK

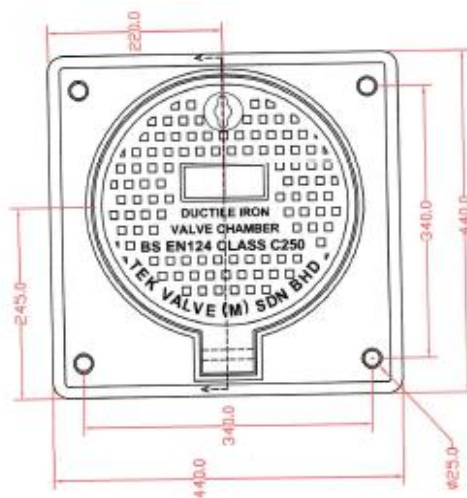
HEAVY DUTY VALVE CHAMBER

CLASS C250 (Not Suitable for Main Entry)

Overall View



Upper View



LIGHT DUTY VALVE CHAMBER (CONE TYPE)

CLASS B125 (Not Suitable for Main Entry)

